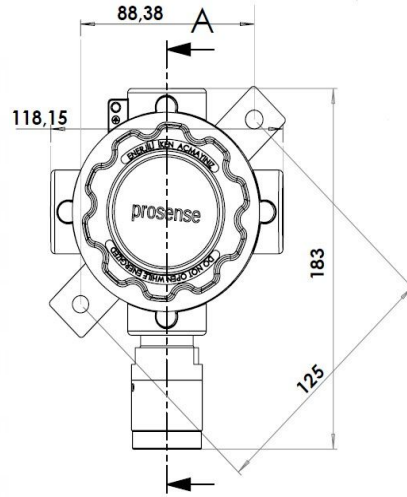


P Series

P-XY35 / P-XY34 / P-XY33 Datasheet



Description

- 4-20mA Analog output, 3 wires connections
- RS485 (Modbus RTU) output, 4 wires
- Stainless Steel Sensor Head
- 1/2" NPT Cable Gland
- Optional 3 Relay (2A, 1F)
- Optional IP66 Sensor Head Adaptor
- Suitable for Zone 1 or Zone 2 applications
- Approvals:

Ex II 2G Ex db IIC T6 Gb

Specifitacion	P-XY35	P-XY34	P-XY33
Sensing Element	Pellistor	Electrochemical	Infrared
Measurement Type	LEL	ppm, Vol	LEL, ppm, Vol
Output Signal	4-20mA(3-Wire) RS485 Modbus RTU(4-Wire)	4-20mA(3-Wire) RS485 Modbus RTU(4-Wire)	4-20mA(3-Wire) RS485 Modbus RTU(4-Wire)
Sensor Warm-up Time	60 sec	60 sec	60 sec
Response Time (T90)	<20 sec	<45 sec	<30 sec
Measuring Range	0-100 LEL	see the Table-1	see the Table-1
Accuracy	%±2	%±2	%±2
Operating Temperature	-20°C ~ +50°C	-20°C ~ +50°C	-20°C ~ +50°C
Humidity	5 ~ 95 %RH	5 ~ 95 %RH	5 ~ 95 %RH
Input	12-24 VDC	12-24 VDC	12-24 VDC
Power Consumption	Max. 4W	Max. 4W	Max. 4W
Optional Relay Outputs	2 Alarm, 1 Fault NO/NC De-energized	2 Alarm, 1 Fault NO/NC De-energized	2 Alarm, 1 Fault NO/NC De-energized
Cable Entry	2 x 1/2" NPT	2 x 1/2" NPT	2 x 1/2" NPT
IP Rating	IP65 Optional IP 66(Sensor Head)	IP65 Optional IP 66(Sensor Head)	IP65 Optional IP 66(Sensor Head)
Junction Box	Die-cast aluminium	Die-cast aluminium	Die-cast aluminium
Sensor Head	Stainless Steel SH30	Stainless Steel SH30	Stainless Steel SH30
Dimensions/Weight	135x215x87mm (1420gr)	135x215x87mm (1420gr)	135x215x87mm (1420gr)
Atex Marking	Ex II 2G Ex db IIC T6	Ex II 2G Ex db IIC T6	Ex II 2G Ex db IIC T6
Hazardous Class	Zone 1 or Zone 2	Zone 1 or Zone 2	Zone 1 or Zone 2
Certificates	IEP 12 ATEX 082 IEP 12 ATEX 103 IEP 12 ATEX 118 X IMQ 11 ATEX 38 X	IEP 12 ATEX 082 IEP 12 ATEX 103 IEP 12 ATEX 118 X IMQ 11 ATEX 38 X	IEP 12 ATEX 082 IEP 12 ATEX 103 IEP 12 ATEX 118 X IMQ 11 ATEX 38 X
Standards	EN 60079-0 EN 60079-1 EN 60079-18	EN 60079-0 EN 60079-1 EN 60079-18	EN 60079-0 EN 60079-1 EN 60079-18

Applications

- Process Industry
- Water Treatment
- Chemical Industry
- Food and Medicine Facilities
- Metal Industry
- Gas Distribution Stations
- Laboratories

Optional Modules

- **P-3R+**: 2 Alarm, 1 Fault NO/NC relay output card
- **P-IP66**: 316L Stainless steel sensor head
- **P-GTA**: Ceiling mount collecting cone
- **UPQ-BTX**: Boat with 4 entries
- **P-HT150**: HC sensor for high temperature environments (only for flammable gases)

P Series

P-XY35 / P-XY34 / P-XY33 Datasheet

Table 1: Gases and Detectors

XY	Gas	Product Code	Measuring Range	LEL(Vol) - TLV/TWA
30	LPG	P-3035 / P-3033	0-100% LEL	1,8
31	Methane	P-3135 / P-3133	0-100% LEL	4,4
32	Petrol Vapors	P-3235/ P-3233	0-100% LEL	1,2
33	n-Butane	P-3335 / P-3333	0-100% LEL	1,6
34	Propane	P-3435/ P-3433	0-100% LEL	2,1
35	Hexane	P-3535 / P-3533	0-100% LEL	1,1
36	Hydrogen	P-3635	0-100% LEL	4
37	Pentane	P-3735 / P-3733	0-100% LEL	1,5
38	Toluene	P-3835/ P-3833	0-100% LEL	1,2-1,27
39	Methyl Alcohol	P-3935/ P -3933	0-100% LEL	6-6,7
40	Heptane	P-4035/ P-4033	0-100% LEL	1,05
41	Octane	P-4135/ P-4133	0-100% LEL	1
42	Ethyl Alcohol	P-4235/ P-4233	0-100% LEL	3-3,3
43	Iso Propanol	P-4335/ P-4333	0-100% LEL	2
44	Carbon Monoxide	P-4434	0-300 ppm	50 ppm
		P-4434/B	0-500 ppm	50 ppm
		P-4434/C	0-1000 ppm	50 ppm
44	Carbon Monoxide	P-4435	0-100% LEL	12,5
45	Asetone	P-4535/ P-4533	0-100% LEL	2,6-3
46	Methyl Ethyl Ketone	P-4635/ P-4633	0-100% LEL	1,8
47	Ethyl Acetate	P-4735/ P-4733	0-100% LEL	2
48	Ammonia	P-4834	0-100 ppm	50 ppm
		P-4834/B	0-1000 ppm	50 ppm
48	Ammonia	P-4835	0-100% LEL	15,3
49	Ethylene	P-4935/ P-4933	0-100% LEL	2,7
50	Acetic Acid	P-5035/ P-5033	0-100% LEL	4
51	Butyl Acetate	P-5135/ P-5133	0-100% LEL	1,4
52	Cyclo Hexane	P-5235/ P-5233	0-100% LEL	1,3
53	Cyclo Pentane	P-5335/ P-5333	0-100% LEL	1,5-2
54	Dioxane	P-5435/ P-5433	0-100% LEL	2
55	Ethane	P-5535/ P-5533	0-100% LEL	3
56	Butyl Alcohol	P-5635/ P-5633	0-100% LEL	1
57	Styrene	P-5735/ P-5733	0-100% LEL	1,1
58	Propylene	P-5835/ P-5833	0-100% LEL	2,4
59	Xylene	P-5935/ P-5933	0-100% LEL	12,5
60	Acetylene	P-6035	0-100% LEL	3
61	Benzene	P-6135/ P-6133	0-100% LEL	3
62	Ethylene Oxide	P-6234	0-20 ppm	1 ppm
63	Vinyl Acetate	P-6335/ P-6333	0-100% LEL	2,6
64	Hydrogen Sulfure	P-6434	0-100 ppm	20 ppm
65	Oxygen	P-6534	0-25% Vol	19,5% Vol
66	Sulfur Dioxide	P-6634	0-10 ppm	5 ppm
67	Nitric Oxide	P-6734	0-250 ppm	25 ppm
68	Nitrogen Dioxide	P-6834	0-30 ppm	5 ppm
69	Chlorine	P-6934	0-10 ppm	1 ppm
70	Hydrocarbon	P-7035/ P-7033	0-100% LEL	-
71	Carbon Dioxide	P-7133	0-5000 ppm	5000 ppm
		P-7133/B	0-5% Vol	
72	Freon	P-7231	0-2000 ppm	-
73	JP8 Fuel	P-7335/ P-7333	0-100% LEL	0,6 -0,7
74	Formaldehyde	P-7434/ P-7435	0-10 ppm,/ 0-100% LEL	-
75	Hydrocyanic Acid	P-7534	0-25 ppm	-
76	Hydrogen Peroxide	P-7634	0-300 ppm	-
77	Nonane	P-7733/ P-7735	0-100% LEL	-
78	Acetaldehyde	P-7833/ P-7835	0-100% LEL	-

- ProSense gas detectors are fully tested and calibrated before delivery. Gas Detectors must be routinely checked and calibrated to ensure fully operational at all times regarding EN 60079:29-2.